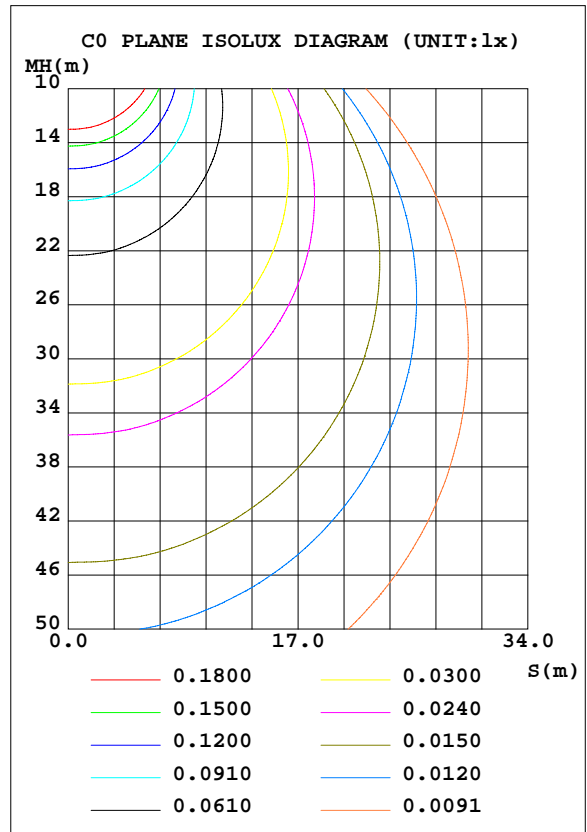
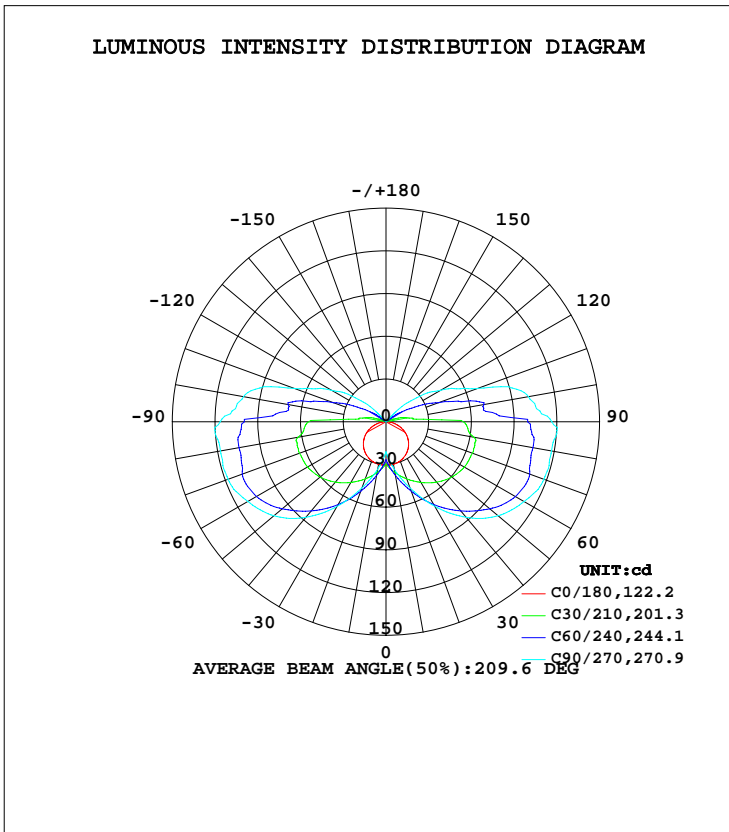


LUMINAIRE PHOTOMETRIC TEST REPORT

NAME:	TYPE:	WEIGHT:
SPEC.:LW-3152400W60 side	DIM.:	SERIAL No.:
MFR.: LEDWIDE LIGHTING CO., LTD	SUR.:1000*10	Shielding Angle:

DATA OF LAMP		PHOTOMETRIC DATA Eff: 117.49 lm/W			
MODEL		I <sub>max</sub> (cd)	120.4	S/MH(C0/180)	1.33
NOMINAL POWER(W)	4.7	LOR(%)	100.0	S/MH(C90/270)	3.74
RATED VOLTAGE(V)	24	TOTAL FLUX(lm)	567.55	η UP, DN(C0-180)	11.1, 38.9
NOMINAL FLUX(lm)	567.549	CIE CLASS	SEMI-D.	η UP, DN(C180-360)	11.1, 38.9
LAMPS INSIDE	1	η up(%)	22.3	CIBSE SHR NOM	1.25
TEST VOLTAGE(V)	220	η down(%)	77.7	CIBSE SHR MAX	1.35



C Range: 0 - 90DEG  
 C Interval: 15.0DEG  
 Test Speed: HIGH  
 Temperature:25.3DEG  
 Operators:  
 Test Date:2019-04-17

γ Range: 0 - 180DEG  
 γ Interval: 1.0DEG  
 Test System:EVERFINE GO-2000A\_V1 SYSTEM V2.0.362  
 Humidity:65.0%  
 Test Distance:12.226m [K=1.0000]  
 Remarks:

ZONAL FLUX DIAGRAM

ZONAL FLUX DIAGRAM:

γ	C0	C45	C90	C135	C180	C225	C270	C315	γ	Φ zone	Φ total	%lum, lamp
10	30.36	37.85	33.79	37.85	30.36	37.85	33.79	37.85	0- 10	3.137	3.137	0.55,0.55
20	29.27	48.21	49.46	48.21	29.27	48.21	49.46	48.21	10- 20	11.56	14.69	2.59,2.59
30	27.23	59.61	68.57	59.61	27.23	59.61	68.57	59.61	20- 30	23.33	38.03	6.7,6.7
40	24.32	70.40	87.59	70.40	24.32	70.40	87.59	70.40	30- 40	37.91	75.93	13.4,13.4
50	20.52	79.58	102.7	79.58	20.52	79.58	102.7	79.58	40- 50	53.67	129.6	22.8,22.8
60	15.83	86.68	112.1	86.68	15.83	86.68	112.1	86.68	50- 60	68.14	197.7	34.8,34.8
70	10.43	90.36	118.0	90.36	10.43	90.36	118.0	90.36	60- 70	78.78	276.5	48.7,48.7
80	5.063	87.48	118.0	87.48	5.063	87.48	118.0	87.48	70- 80	82.91	359.4	63.3,63.3
90	0.7883	79.99	116.5	79.99	0.7883	79.99	116.5	79.99	80- 90	81.78	441.2	77.7,77.7
100	0.2033	45.28	101.6	45.28	0.2033	45.28	101.6	45.28	90-100	58.04	499.2	88,88
110	0.2502	19.30	68.39	19.30	0.2502	19.30	68.39	19.30	100-110	39.40	538.6	94.9,94.9
120	0.3049	5.914	44.40	5.914	0.3049	5.914	44.40	5.914	110-120	19.27	557.9	98.3,98.3
130	0.3752	0.1407	22.96	0.1407	0.3752	0.1407	22.96	0.1407	120-130	7.788	565.7	99.7,99.7
140	0.3830	0.1643	0.3603	0.1643	0.3830	0.1643	0.3603	0.1643	130-140	1.492	567.2	99.9,99.9
150	0.3985	0.2112	0.1173	0.2112	0.3985	0.2112	0.1173	0.2112	140-150	0.1284	567.3	100,100
160	0.4065	0.2814	0.1173	0.2814	0.4065	0.2814	0.1173	0.2814	150-160	0.1097	567.4	100,100
170	0.4532	0.3753	0.1484	0.3753	0.4532	0.3753	0.1484	0.3753	160-170	0.0812	567.5	100,100
180	0.5159	0.4847	0.2971	0.4847	0.5159	0.4847	0.2971	0.4847	170-180	0.0350	567.5	100,100
DEG	LUMINOUS INTENSITY:cd									UNIT:lm		

Conical surface Flux(90deg): 100.81 lm

%lum = 17.8%  
%lamp = 17.8%

Conical surface Flux(120deg): 197.74 lm

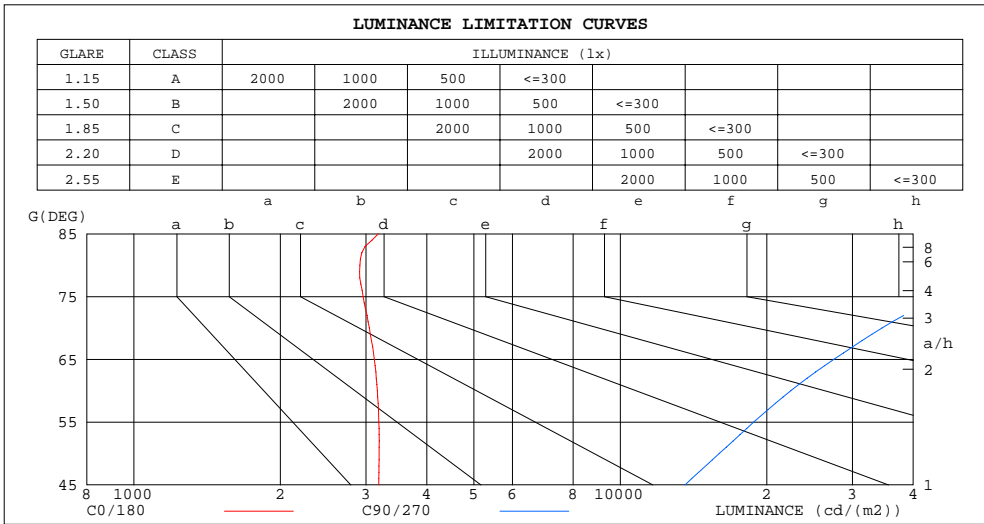
%lum = 34.8%  
%lamp = 34.8%

C Range: 0 - 90DEG  
C Interval: 15.0DEG  
Test Speed: HIGH  
Temperature:25.3DEG  
Operators:  
Test Date:2019-04-17

γ Range: 0 - 180DEG  
γ Interval: 1.0DEG  
Test System:EVERFINE GO-2000A\_V1 SYSTEM V2.0.362  
Humidity:65.0%  
Test Distance:12.226m [K=1.0000]  
Remarks:

LUMINANCE LIMITATION CURVES

NAME:	TYPE:	WEIGHT:
SPEC.:LW-3152400W60 side	DIM.:	SERIAL No.:
MFR.: LEDWIDE LIGHTING CO., LTD	SUR.:1000*10	Shielding Angle:



LUMINANCE cd/(m2)		
G(DEG)	C0/180	C90/270
85	3182	137327
80	2916	67969
75	2959	45825
70	3048	34510
65	3120	27486
60	3165	22414
55	3187	18804
50	3192	15975
45	3187	13578

C Range: 0 - 90DEG  
 C Interval: 15.0DEG  
 Test Speed: HIGH  
 Temperature:25.3DEG  
 Operators:  
 Test Date:2019-04-17

$\gamma$  Range: 0 - 180DEG  
 $\gamma$  Interval: 1.0DEG  
 Test System:EVERFINE GO-2000A\_V1 SYSTEM V2.0.362  
 Humidity:65.0%  
 Test Distance:12.226m [K=1.0000]  
 Remarks:

WEC AND CCEC

NAME:	TYPE:	WEIGHT:
SPEC.:LW-3152400W60 side	DIM.:	SERIAL No.:
MFR.: LEDWIDE LIGHTING CO., LTD	SUR.:1000*10	Shielding Angle:

ρcc	80%			70%			50%			30%			10%			0
ρw	50%	30%	10%	50%	30%	10%	50%	30%	10%	50%	30%	10%	50%	30%	10%	0
ρfc	20%			20%			20%			20%			20%			0
RCR	RCR:Room Cavity Ratio						Wall Exitance Coefficients(WEC)									
0.0																
1.0	.495	.282	.089	.481	.274	.087	.454	.261	.083	.430	.248	.080	.407	.236	.076	
2.0	.404	.221	.068	.391	.215	.066	.366	.204	.063	.344	.193	.060	.323	.183	.058	
3.0	.346	.184	.055	.334	.179	.054	.312	.169	.051	.292	.160	.049	.272	.151	.047	
4.0	.304	.158	.046	.293	.153	.045	.273	.145	.043	.254	.137	.041	.237	.129	.039	
5.0	.271	.138	.040	.261	.134	.039	.243	.127	.037	.226	.119	.035	.210	.112	.034	
6.0	.245	.123	.035	.236	.119	.034	.219	.112	.033	.204	.106	.031	.189	.100	.030	
7.0	.223	.110	.031	.215	.107	.031	.200	.101	.029	.185	.095	.028	.172	.089	.026	
8.0	.205	.100	.028	.198	.097	.028	.184	.092	.026	.170	.086	.025	.158	.081	.024	
9.0	.190	.092	.026	.183	.089	.025	.170	.084	.024	.158	.079	.023	.146	.074	.021	
10.0	.176	.085	.023	.170	.082	.023	.158	.077	.022	.147	.073	.021	.136	.068	.020	

ρcc	80%			70%			50%			30%			10%			0
ρw	50%	30%	10%	50%	30%	10%	50%	30%	10%	50%	30%	10%	50%	30%	10%	0
ρfc	20%			20%			20%			20%			20%			0
RCR	RCR:Room Cavity Ratio						Ceiling Cavity Exitance Coefficients(CCEC)									
0.0	.360	.360	.360	.308	.308	.308	.210	.210	.210	.121	.121	.121	.039	.039	.039	
1.0	.364	.326	.291	.312	.279	.250	.213	.192	.173	.123	.111	.101	.039	.036	.033	
2.0	.359	.304	.257	.308	.261	.222	.211	.181	.155	.122	.105	.091	.039	.034	.030	
3.0	.352	.288	.237	.302	.248	.205	.207	.173	.144	.120	.101	.085	.038	.033	.028	
4.0	.344	.276	.224	.295	.239	.195	.203	.166	.137	.117	.097	.081	.038	.032	.027	
5.0	.336	.267	.216	.288	.231	.188	.199	.161	.132	.115	.095	.079	.037	.031	.026	
6.0	.328	.259	.210	.282	.224	.183	.194	.157	.129	.113	.092	.077	.036	.030	.025	
7.0	.320	.253	.205	.275	.219	.179	.190	.153	.127	.110	.090	.075	.036	.030	.025	
8.0	.313	.247	.202	.269	.214	.176	.186	.150	.125	.108	.089	.074	.035	.029	.025	
9.0	.306	.242	.199	.263	.210	.174	.183	.148	.123	.106	.087	.074	.034	.029	.024	
10.0	.299	.238	.197	.258	.207	.172	.179	.146	.122	.104	.086	.073	.034	.028	.024	

C Range: 0 - 90DEG  
 C Interval: 15.0DEG  
 Test Speed: HIGH  
 Temperature:25.3DEG  
 Operators:  
 Test Date:2019-04-17

γ Range: 0 - 180DEG  
 γ Interval: 1.0DEG  
 Test System:EVERFINE GO-2000A\_V1 SYSTEM V2.0.362  
 Humidity:65.0%  
 Test Distance:12.226m [K=1.0000]  
 Remarks:

UGR(Unified Glare Rating) Table

NAME:		TYPE:					WEIGHT:				
SPEC.:LW-3152400W60 side		DIM.:					SERIAL No.:				
MFR.: LEDWIDE LIGHTING CO., LTD		SUR.:1000*10					Shielding Angle:				
ceiling/cavity	0.7	0.7	0.5	0.5	0.3	0.7	0.7	0.5	0.5	0.3	
walls	0.5	0.3	0.5	0.3	0.3	0.5	0.3	0.5	0.3	0.3	
working plane	0.2	0.2	0.2	0.2	0.2	0.2	0.2	0.2	0.2	0.2	
Room dimensions	Viewed crosswise					Viewed endwise					
x = 2H y = 2H	19.3	20.8	19.9	21.4	22.1	25.1	26.6	25.7	27.2	27.9	
3H	21.0	22.4	21.6	23.0	23.7	28.7	30.1	29.3	30.7	31.4	
4H	21.8	23.1	22.4	23.7	24.5	30.6	31.9	31.2	32.6	33.3	
6H	22.4	23.6	23.0	24.3	25.1	32.7	34.0	33.4	34.6	35.4	
8H	22.6	23.8	23.3	24.5	25.3	33.9	35.1	34.5	35.8	36.6	
12H	22.8	23.9	23.4	24.6	25.4	35.3	36.4	35.9	37.1	37.9	
4H 2H	22.5	23.8	23.1	24.4	25.2	25.8	27.1	26.4	27.7	28.5	
3H	24.6	25.8	25.3	26.5	27.3	29.6	30.8	30.3	31.4	32.2	
4H	25.7	26.8	26.3	27.4	28.3	31.7	32.8	32.4	33.5	34.3	
6H	26.5	27.5	27.2	28.2	29.1	34.0	35.0	34.7	35.7	36.6	
8H	26.9	27.8	27.6	28.5	29.4	35.3	36.3	36.1	37.0	37.9	
12H	27.1	28.0	27.8	28.7	29.6	36.8	37.7	37.6	38.5	39.3	
8H 4H	28.0	29.0	28.8	29.7	30.6	32.1	33.1	32.8	33.8	34.7	
6H	29.5	30.3	30.3	31.1	32.0	34.8	35.6	35.5	36.4	37.3	
8H	30.2	30.9	30.9	31.7	32.6	36.4	37.1	37.1	37.9	38.8	
12H	30.7	31.3	31.4	32.1	33.0	38.1	38.8	38.9	39.6	40.5	
12H 4H	28.8	29.7	29.5	30.4	31.3	32.2	33.0	32.9	33.8	34.7	
6H	30.6	31.3	31.3	32.1	33.0	35.0	35.7	35.7	36.5	37.4	
8H	31.5	32.1	32.2	32.9	33.8	36.6	37.3	37.4	38.1	39.0	
Variations with the observer position at spacings:											
S = 1.0H	+ 0.1 / - 0.1					+ 0.1 / - 0.1					
1.5H	+ 0.2 / - 0.2					+ 0.2 / - 0.3					
2.0H	+ 0.3 / - 0.3					+ 0.3 / - 0.4					

CIE Pub.117, 567.5 lm Total Lamp Luminous Flux Correct (8log(F/F0) = -2.0)

C Range: 0 - 90DEG  
 C Interval: 15.0DEG  
 Test Speed: HIGH  
 Temperature:25.3DEG  
 Operators:  
 Test Date:2019-04-17

γ Range: 0 - 180DEG  
 γ Interval: 1.0DEG  
 Test System:EVERFINE GO-2000A\_V1 SYSTEM V2.0.362  
 Humidity:65.0%  
 Test Distance:12.226m [K=1.0000]  
 Remarks:

UTILIZATION FACTORS TABLE

NAME:	TYPE:	WEIGHT:
SPEC.:LW-3152400W60 side	DIM.:	SERIAL No.:
MFR.: LEDWIDE LIGHTING CO., LTD	SUR.:1000*10	Shielding Angle:

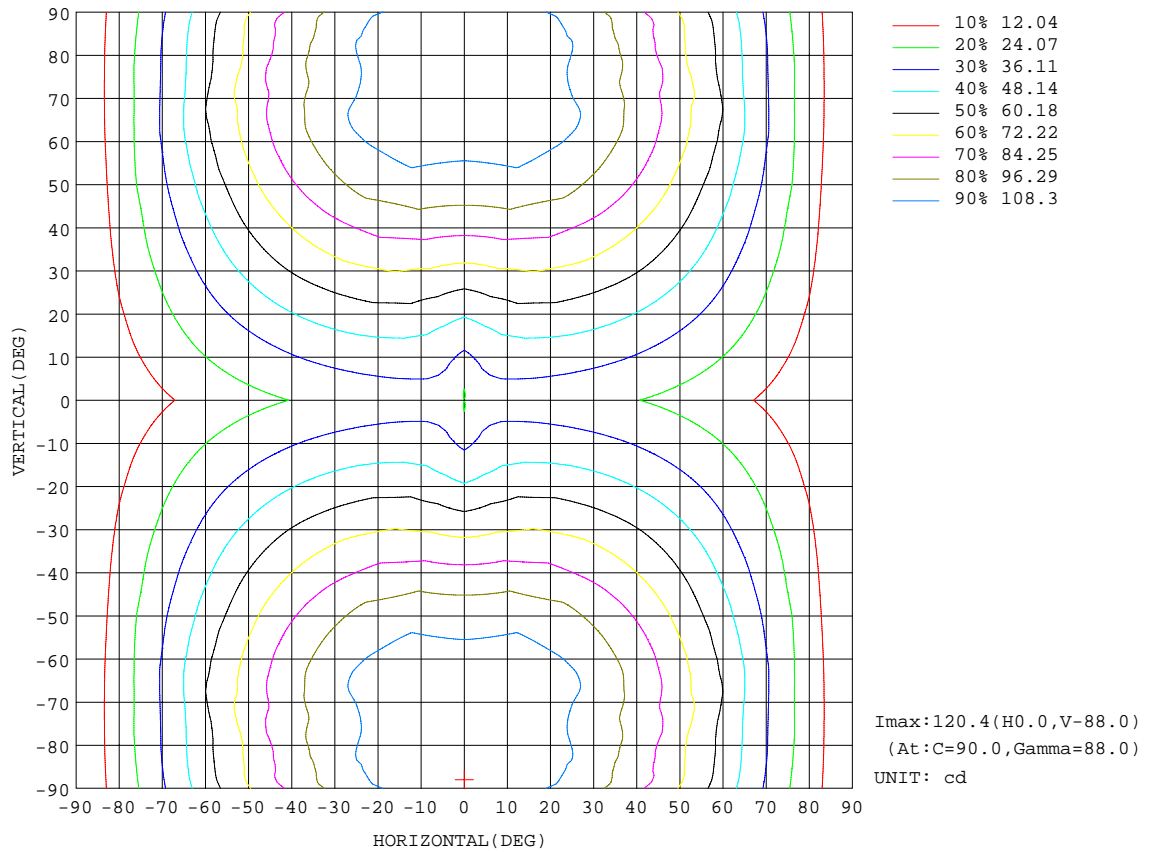
REFLECTANCE										
Ceiling	0.8	0.8	0.8	0.7	0.7	0.7	0.5	0.5	0.5	0
Walls	0.7	0.5	0.3	0.7	0.5	0.3	0.7	0.5	0.3	0
Working plane	0.2	0.2	0.2	0.2	0.2	0.2	0.2	0.2	0.2	0
ROOM INDEX	UTILIZATION FACTORS(PERCENT) $k(RI) \times RCR = 5$									
k = 0.60	39	25	17	38	25	17	36	24	16	9
0.80	47	32	23	46	32	23	43	30	22	14
1.00	55	39	29	53	38	29	49	39	28	18
1.25	62	46	36	59	45	35	54	42	34	23
1.50	67	52	41	64	50	40	59	47	38	27
2.00	75	61	51	72	59	49	65	55	46	33
2.50	80	67	57	76	65	55	70	60	52	38
3.00	84	72	63	81	70	61	73	64	57	42
4.00	90	80	71	86	76	68	78	70	64	47
5.00	94	85	77	89	81	74	81	74	68	51
ROOM INDEX	UF(total)									Direct
According to DIN EN 13032-2 2004			Suspended				SHRNOM = 1.25			

C Range: 0 - 90DEG  
 C Interval: 15.0DEG  
 Test Speed: HIGH  
 Temperature:25.3DEG  
 Operators:  
 Test Date:2019-04-17

$\gamma$  Range: 0 - 180DEG  
 $\gamma$  Interval: 1.0DEG  
 Test System:EVERFINE GO-2000A\_V1 SYSTEM V2.0.362  
 Humidity:65.0%  
 Test Distance:12.226m [K=1.0000]  
 Remarks:

ISOCANDELA DIAGRAM

NAME:	TYPE:	WEIGHT:
SPEC.:LW-3152400W60 side	DIM.:	SERIAL No.:
MFR.: LEDWIDE LIGHTING CO., LTD	SUR.:1000*10	Shielding Angle:

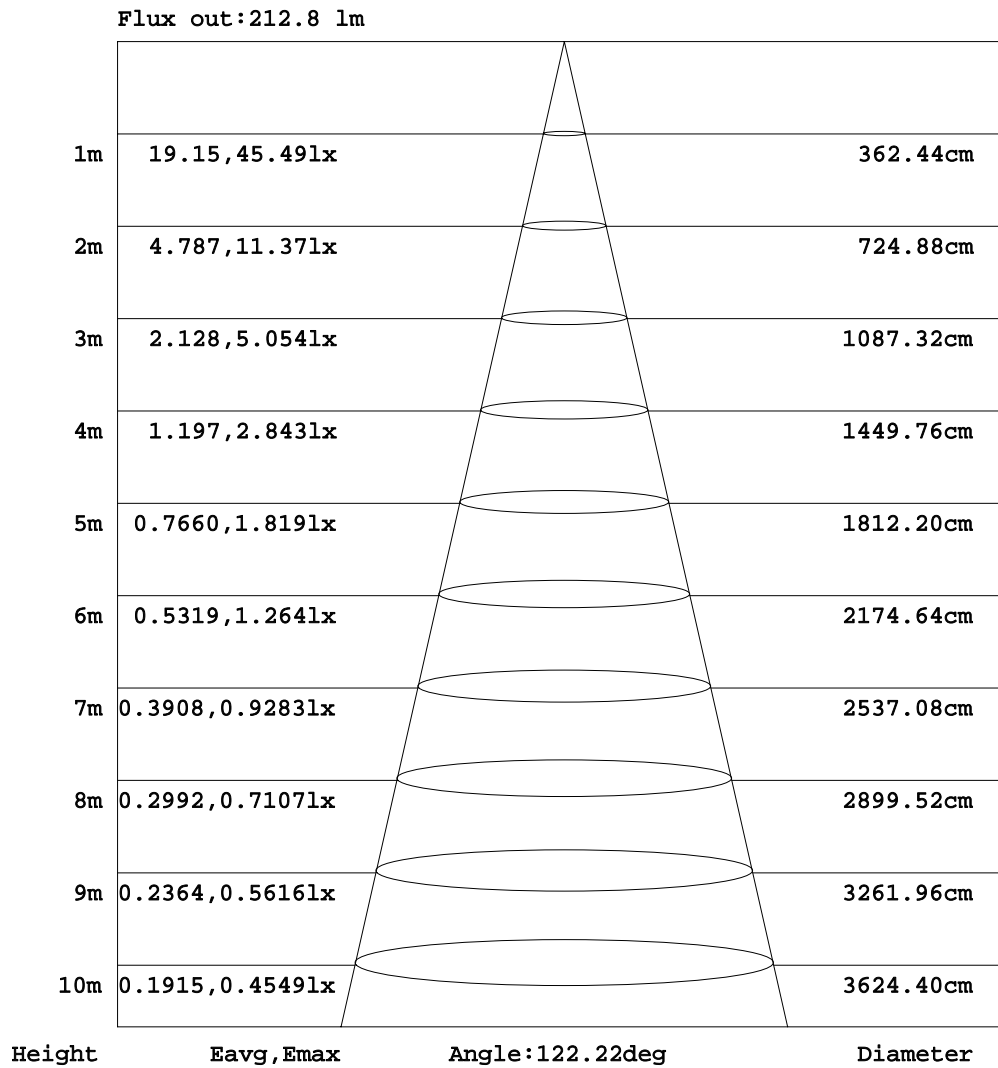


C Range: 0 - 90DEG  
 C Interval: 15.0DEG  
 Test Speed: HIGH  
 Temperature: 25.3DEG  
 Operators:  
 Test Date: 2019-04-17

$\gamma$  Range: 0 - 180DEG  
 $\gamma$  Interval: 1.0DEG  
 Test System: EVERFINE GO-2000A\_V1 SYSTEM V2.0.362  
 Humidity: 65.0%  
 Test Distance: 12.226m [K=1.0000]  
 Remarks:

AAI Figure

NAME:	TYPE:	WEIGHT:
SPEC.:LW-3152400W60 side	DIM.:	SERIAL No.:
MFR.: LEDWIDE LIGHTING CO., LTD	SUR.:1000*10	Shielding Angle:



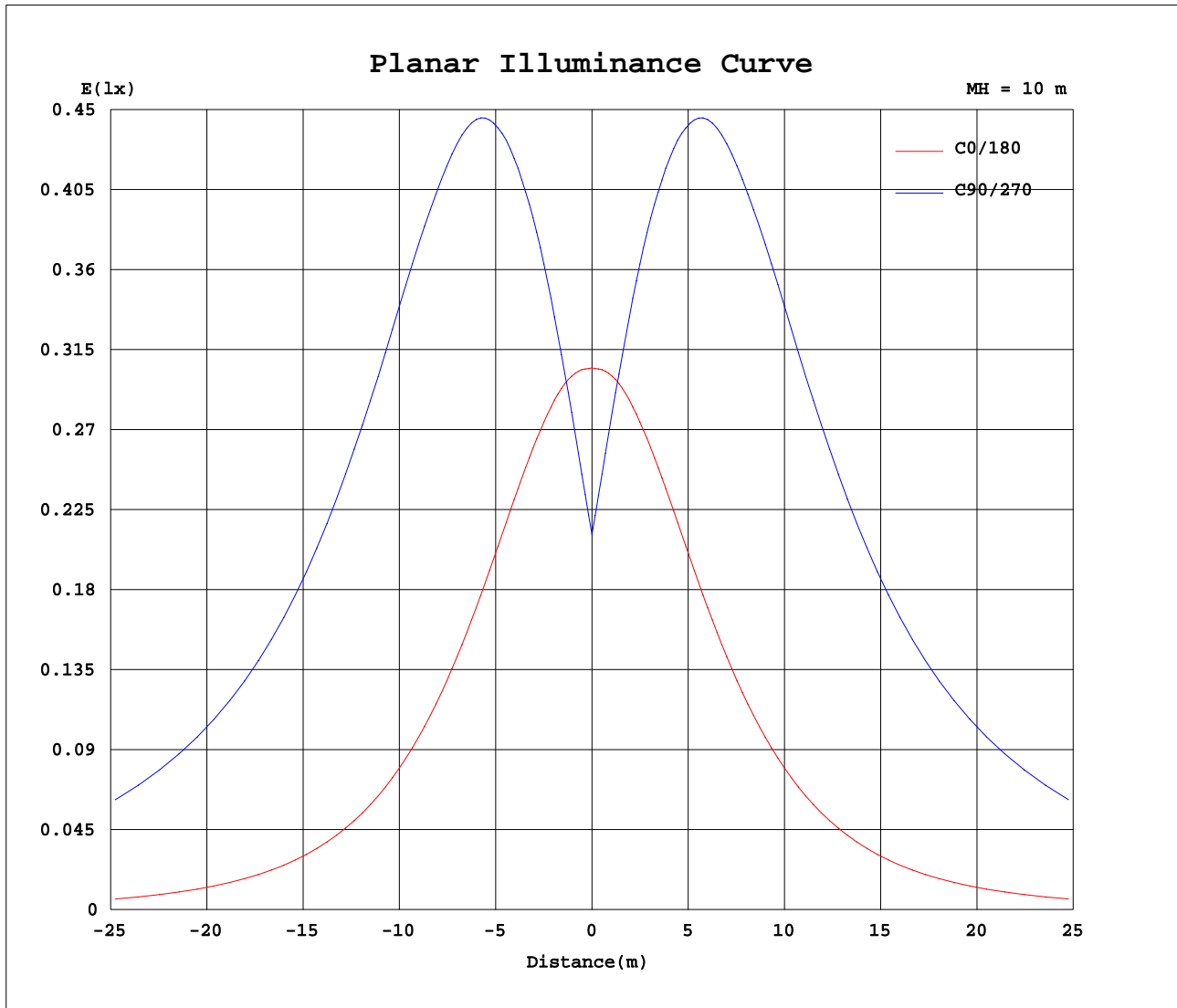
Note:The Curves indicate the illuminated area and the average illumination when the luminaire is at different distance.

C Range: 0 - 90DEG  
 C Interval: 15.0DEG  
 Test Speed: HIGH  
 Temperature:25.3DEG  
 Operators:  
 Test Date:2019-04-17

γ Range: 0 - 180DEG  
 γ Interval: 1.0DEG  
 Test System:EVERFINE GO-2000A\_V1 SYSTEM V2.0.362  
 Humidity:65.0%  
 Test Distance:12.226m [K=1.0000]  
 Remarks:



Planar Illuminance Curve



C Range: 0 - 90DEG  
 C Interval: 15.0DEG  
 Test Speed: HIGH  
 Temperature: 25.3DEG  
 Operators:  
 Test Date: 2019-04-17

γ Range: 0 - 180DEG  
 γ Interval: 1.0DEG  
 Test System: EVERFINE GO-2000A\_V1 SYSTEM V2.0.362  
 Humidity: 65.0%  
 Test Distance: 12.226m [K=1.0000]  
 Remarks:

LUMINOUS DISTRIBUTION INTENSITY DATA

NAME:	TYPE:	WEIGHT:
SPEC.:LW-3152400W60 side	DIM.:	SERIAL No.:
MFR.: LEDWIDE LIGHTING CO., LTD	SUR.:1000*10	Shielding Angle:

Table--1

UNIT: cd

C( DEG) γ (DEG)	0	15	30	45	60	75	90	105	120	135	150	165	180	195	210	225	240	255	270
0	30.5	30.3	29.7	28.4	26.7	23.7	21.1	23.7	26.7	28.4	29.7	30.3	30.5	30.3	29.7	28.4	26.7	23.7	21.1
5	30.5	32.0	32.9	33.0	32.2	29.8	27.1	29.8	32.2	33.0	32.9	32.0	30.5	32.0	32.9	33.0	32.2	29.8	27.1
10	30.4	33.6	36.2	37.9	38.3	36.4	33.8	36.4	38.3	37.9	36.2	33.6	30.4	33.6	36.2	37.9	38.3	36.4	33.8
15	29.9	34.9	39.5	42.9	44.8	43.7	41.3	43.7	44.8	42.9	39.5	34.9	29.9	34.9	39.5	42.9	44.8	43.7	41.3
20	29.3	36.0	42.7	48.2	51.9	51.8	49.5	51.8	51.9	48.2	42.7	36.0	29.3	36.0	42.7	48.2	51.9	51.8	49.5
25	28.4	37.0	46.0	53.9	59.5	60.7	58.6	60.7	59.5	53.9	46.0	37.0	28.4	37.0	46.0	53.9	59.5	60.7	58.6
30	27.2	37.7	49.2	59.6	67.1	69.7	68.6	69.7	67.1	59.6	49.2	37.7	27.2	37.7	49.2	59.6	67.1	69.7	68.6
35	25.9	38.3	52.4	65.1	74.5	78.5	78.4	78.5	74.5	65.1	52.4	38.3	25.9	38.3	52.4	65.1	74.5	78.5	78.4
40	24.3	38.6	55.3	70.4	81.8	87.6	87.6	87.6	81.8	70.4	55.3	38.6	24.3	38.6	55.3	70.4	81.8	87.6	87.6
45	22.5	38.7	58.1	75.1	88.5	96.0	96.0	96.0	88.5	75.1	58.1	38.7	22.5	38.7	58.1	75.1	88.5	96.0	96.0
50	20.5	38.6	60.4	79.6	95.1	103	103	103	95.1	79.6	60.4	38.6	20.5	38.6	60.4	79.6	95.1	103	103
55	18.3	38.3	62.2	83.3	101	109	108	109	101	83.3	62.2	38.3	18.3	38.3	62.2	83.3	101	109	108
60	15.8	37.6	63.6	86.7	105	112	112	112	105	86.7	63.6	37.6	15.8	37.6	63.6	86.7	105	112	112
65	13.2	36.6	64.2	89.2	107	115	116	115	107	89.2	64.2	36.6	13.2	36.6	64.2	89.2	107	115	116
70	10.4	35.2	64.6	90.4	107	117	118	117	107	90.4	64.6	35.2	10.4	35.2	64.6	90.4	107	117	118
75	7.66	33.5	64.7	88.8	105	114	119	114	105	88.8	64.7	33.5	7.66	33.5	64.7	88.8	105	114	119
80	5.06	31.6	62.6	87.5	105	115	118	115	105	87.5	62.6	31.6	5.06	31.6	62.6	87.5	105	115	118
85	2.77	28.3	57.8	83.5	103	116	120	116	103	83.5	57.8	28.3	2.77	28.3	57.8	83.5	103	116	120
90	0.79	24.8	54.2	80.0	99.5	112	116	112	99.5	80.0	54.2	24.8	0.79	24.8	54.2	80.0	99.5	112	116
95	0.20	3.72	21.3	45.4	75.1	96.9	106	96.9	75.1	45.4	21.3	3.72	0.20	3.72	21.3	45.4	75.1	96.9	106
100	0.20	2.77	15.7	45.3	69.8	88.8	102	88.8	69.8	45.3	15.7	2.77	0.20	2.77	15.7	45.3	69.8	88.8	102
105	0.24	0.41	11.6	33.0	54.6	82.1	91.8	82.1	54.6	33.0	11.6	0.41	0.24	0.41	11.6	33.0	54.6	82.1	91.8
110	0.25	0.18	5.60	19.3	39.4	60.5	68.4	60.5	39.4	19.3	5.60	0.18	0.25	0.18	5.60	19.3	39.4	60.5	68.4
115	0.29	0.21	1.40	11.7	28.3	44.0	54.9	44.0	28.3	11.7	1.40	0.21	0.29	0.21	1.40	11.7	28.3	44.0	54.9
120	0.30	0.23	0.17	5.91	17.1	34.2	44.4	34.2	17.1	5.91	0.17	0.23	0.30	0.23	0.17	5.91	17.1	34.2	44.4
125	0.35	0.24	0.16	1.50	9.73	22.0	35.4	22.0	9.73	1.50	0.16	0.24	0.35	0.24	0.16	1.50	9.73	22.0	35.4
130	0.38	0.27	0.16	0.14	2.34	12.4	23.0	12.4	2.34	0.14	0.16	0.27	0.38	0.27	0.16	0.14	2.34	12.4	23.0
135	0.38	0.30	0.16	0.15	0.30	2.42	12.3	2.42	0.30	0.15	0.16	0.30	0.38	0.30	0.16	0.15	0.30	2.42	12.3
140	0.38	0.31	0.16	0.16	0.13	0.12	0.36	0.12	0.13	0.16	0.16	0.31	0.38	0.31	0.16	0.16	0.13	0.12	0.36
145	0.38	0.34	0.16	0.19	0.13	0.13	0.12	0.13	0.13	0.19	0.16	0.34	0.38	0.34	0.16	0.19	0.13	0.13	0.12
150	0.40	0.38	0.21	0.21	0.13	0.14	0.12	0.14	0.13	0.21	0.21	0.38	0.40	0.38	0.21	0.21	0.13	0.14	0.12
155	0.40	0.40	0.24	0.25	0.13	0.16	0.12	0.16	0.13	0.25	0.24	0.40	0.40	0.40	0.24	0.25	0.13	0.16	0.12
160	0.41	0.43	0.26	0.28	0.13	0.18	0.12	0.18	0.13	0.28	0.26	0.43	0.41	0.43	0.26	0.28	0.13	0.18	0.12
165	0.42	0.45	0.30	0.32	0.17	0.22	0.13	0.22	0.17	0.32	0.30	0.45	0.42	0.45	0.30	0.32	0.17	0.22	0.13
170	0.45	0.48	0.34	0.38	0.25	0.26	0.15	0.26	0.25	0.38	0.34	0.48	0.45	0.48	0.34	0.38	0.25	0.26	0.15
175	0.51	0.51	0.38	0.41	0.28	0.32	0.24	0.32	0.28	0.41	0.38	0.51	0.51	0.51	0.38	0.41	0.28	0.32	0.24
180	0.52	0.52	0.48	0.48	0.38	0.38	0.30	0.38	0.38	0.48	0.48	0.52	0.52	0.52	0.48	0.48	0.38	0.38	0.30

C Range: 0 - 90DEG  
 C Interval: 15.0DEG  
 Test Speed: HIGH  
 Temperature:25.3DEG  
 Operators:  
 Test Date:2019-04-17

γ Range: 0 - 180DEG  
 γ Interval: 1.0DEG  
 Test System:EVERFINE GO-2000A\_V1 SYSTEM V2.0.362  
 Humidity:65.0%  
 Test Distance:12.226m [K=1.0000]  
 Remarks:

LUMINOUS DISTRIBUTION INTENSITY DATA

NAME:	TYPE:	WEIGHT:
SPEC.:LW-3152400W60 side	DIM.:	SERIAL No.:
MFR.: LEDWIDE LIGHTING CO., LTD	SUR.:1000*10	Shielding Angle:

Table--2

UNIT: cd

C( DEG) γ (DEG)	285	300	315	330	345														
0	23.7	26.7	28.4	29.7	30.3														
5	29.8	32.2	33.0	32.9	32.0														
10	36.4	38.3	37.9	36.2	33.6														
15	43.7	44.8	42.9	39.5	34.9														
20	51.8	51.9	48.2	42.7	36.0														
25	60.7	59.5	53.9	46.0	37.0														
30	69.7	67.1	59.6	49.2	37.7														
35	78.5	74.5	65.1	52.4	38.3														
40	87.6	81.8	70.4	55.3	38.6														
45	96.0	88.5	75.1	58.1	38.7														
50	103	95.1	79.6	60.4	38.6														
55	109	101	83.3	62.2	38.3														
60	112	105	86.7	63.6	37.6														
65	115	107	89.2	64.2	36.6														
70	117	107	90.4	64.6	35.2														
75	114	105	88.8	64.7	33.5														
80	115	105	87.5	62.6	31.6														
85	116	103	83.5	57.8	28.3														
90	112	99.5	80.0	54.2	24.8														
95	96.9	75.1	45.4	21.3	3.72														
100	88.8	69.8	45.3	15.7	2.77														
105	82.1	54.6	33.0	11.6	0.41														
110	60.5	39.4	19.3	5.60	0.18														
115	44.0	28.3	11.7	1.40	0.21														
120	34.2	17.1	5.91	0.17	0.23														
125	22.0	9.73	1.50	0.16	0.24														
130	12.4	2.34	0.14	0.16	0.27														
135	2.42	0.30	0.15	0.16	0.30														
140	0.12	0.13	0.16	0.16	0.31														
145	0.13	0.13	0.19	0.16	0.34														
150	0.14	0.13	0.21	0.21	0.38														
155	0.16	0.13	0.25	0.24	0.40														
160	0.18	0.13	0.28	0.26	0.43														
165	0.22	0.17	0.32	0.30	0.45														
170	0.26	0.25	0.38	0.34	0.48														
175	0.32	0.28	0.41	0.38	0.51														
180	0.38	0.38	0.48	0.48	0.52														

C Range: 0 - 90DEG  
 C Interval: 15.0DEG  
 Test Speed: HIGH  
 Temperature:25.3DEG  
 Operators:  
 Test Date:2019-04-17

γ Range: 0 - 180DEG  
 γ Interval: 1.0DEG  
 Test System:EVERFINE GO-2000A\_V1 SYSTEM V2.0.362  
 Humidity:65.0%  
 Test Distance:12.226m [K=1.0000]  
 Remarks: